

A PRACTICAL MATERNITY GOWN.

INVENTED BY FRAULEIN KÄTHE HARTMANN, MEMBER, GERMAN NURSES' ASSOCIATION.

Hitherto gowns worn by women during the period of pregnancy and nursing have not been found very practicable. It is obviously necessary that a special gown of this sort must adapt itself to the gradual increase in size. Any form of pressure on the body at such a time would be injurious to the health. With the old style, the principle of such a gown appears to have been rather overlooked; while various unnecessary flaps and buttons were introduced, or there was no convenient arrangement to allow of the child reaching the breast, so that the mothers had the inconvenience of undressing.

More especially in Lying-in Hospitals, and infants' clinics, have such inconvenient garments been found particularly objectionable. After making a variety of experiments in the Empress Augusta Victoria Institution at Charlottenburg, by the courtesy of the Superintendent, Frau Kern, in order that I might produce a gown as free as possible from restricting bands, and of the most practical and hygienic pattern possible, I at last invented a suitable pattern for the purpose, with the result that

I am now able to offer the public the maternity gown here shown and explained. Formerly gowns for nursing mothers were made to open, either in the middle, or at the left side. In the execution of this latter design, the entire chest must be exposed, in order to reach the right breast, which is an obvious disadvantage; for there is the danger of taking cold, besides the unpleasantness to the woman herself.

In my invention all these difficulties are obviated, in this way:—With the nursing gown itself, as well as with the different parts

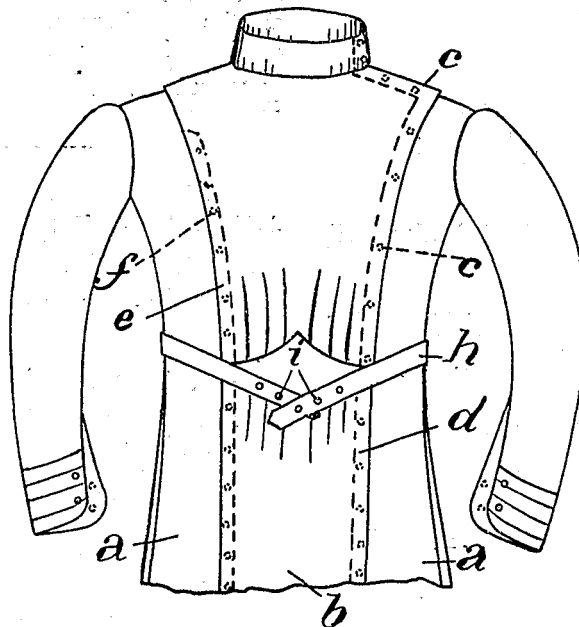
of the nursing *underclothing*, specially designed to suit it, including a particular kind of bodice replacing the ordinary corsets, I have arranged for a double opening, namely: On the left side is the main opening, and extends from the abdomen to the collar band; on the right side is the auxiliary opening, and extends from the abdomen to the shoulder. The gown is constructed to serve the twofold purpose of (1) a nursing gown, and also (2) a gown for any exceptional circumstance. In form it is a simple corset-like gown, furnished with a front breadth, the lower portion of which only is sewn to the gown. The main approach to the breast is the opening on the left side, in a line from the abdomen to the collar, and is closed by press buttons. The right upper portion of the front breadth is, on the contrary, *stitched* on to the shoulder; while the actual opening is secured with press buttons in a similar manner to the left side. Hooks can be used in the place of patent fasteners (press buttons) if preferred.

I have made the gown in two styles; the one for patients in Lying-in Institutions, and the other for private patients. In the former style, the half-belt is placed at the sides beneath the arms, and is kept in place by press buttons. In the latter style, in order to adapt the gown to the prevailing fashion, in the place of the half-belt at the side, an elastic band is

placed in the back a little above the waist opening. By this means, together with the provision of back pleats, pregnancy is accommodated, while the figure is concealed as much as possible.

The front part of the bodice is in the nature of a little jacket falling over the skirt, which by means of press buttons and inverted pleats is made continuously movable. The whole is secured by a movable outside band.

This innovation commends itself principally on account of its great practical simplicity, but more especially because, from beginning to



HOSPITAL MATERNITY GOWN.

- (a) High waisted dress. (b) Front width attached.
 (c) Patent Fasteners. (d) Left side, principal opening.
 (e) Right side, duplicate opening. (f) Patent fasteners.
 (g) Patent fasteners. (h) Semi-circular belt. (i) Patent fasteners.

[previous page](#)

[next page](#)